

Canon

imageRUNNER®
C3170 SERIES



CORPORATE
SYSTEMS



Color-Enabled



meap
POWERED BY 1

imageRUNNER®
C3170 SERIES

CORPORATE SYSTEMS

THE NEXT GENERATION IN COLOR MULTIFUNCTION TECHNOLOGY

Meet the color-enabled Canon
imageRUNNER® C3170 Series—
multifunction imaging systems
in a class of their own.

The color-enabled imageRUNNER C3170 Series is a new breed of customizable office solutions. Featuring Canon's next-generation Color imagePlatform controller and innovative MEAP® (Multifunctional Embedded Application Platform) technology, the compact imageRUNNER C3170 Series is **Internet-ready** for the tightest possible integration with your existing network infrastructure.

Inheriting Canon's reputation for performance and image quality that has become synonymous with the imageRUNNER name, the Canon imageRUNNER C3170 Series is the tool your company needs not just to survive, but to thrive in today's ultra-competitive business environment.



A COMPLETE SPECTRUM OF FUNCTIONALITY

More than color-enabled digital copiers/printers, the imageRUNNER C3170 Series is a total color communications hub for your entire office.

The imageRUNNER C3170 Series is actually a pair of versatile, modular machines that may be configured to meet your individual needs—right down to matching specific workflows unique to your business through MEAP technology. The imageRUNNER C3170 Series models deliver output at up to 31 ppm in black and white and 7 ppm in full color, while paperless information distribution is executed at network speed and minimal cost by sending files over data lines. Canon's innovative Color Universal Send™ technology is standard and ensures the instantaneous delivery of information to all recipients simultaneously via Scan-to-E-Mail, Scan-to-I-Fax, Scan-to-File, and Scan-to-Mail Box. In addition, the imageRUNNER C3170 Series can be equipped with single or dual-line Super G3 faxing. Both models also serve as a local document library for archival/print-on-demand needs through integrated Mail Boxes that are part of the systems' standard 80GB Hard Disk Drive. Information is never out of reach with the power of imageRUNNER technology working for you.

Scan while you print. Print while you fax. Program and scan originals for the next job while the system is busy. And every user has access to intuitively designed drivers and utilities plus real-time system status through Remote UI™ to help improve productivity.



Function	imageRUNNER C3170U	imageRUNNER C3170i
Copy	Standard	
Mail Box	Standard	
Print	Standard: UFR II Optional:* PCL, PostScript	Standard: UFR II, PCL, PostScript
Fax	Optional: Super G3 Fax (1 Line or 2 Lines)**	Optional: Super G3 Fax (1 Line or 2 Lines)
Scan	Standard: Color Network ScanGear	
Send	Standard: Color Universal Send	
	Optional: PDF High Compression Kit-A1**	Optional: PDF High Compression Kit-A1
	Optional: Universal Send PDF Enhancement Kit-C1***	
Web Access	Optional†^	Optional†
MEAP	Standard	

- * Requires Color PCL/PS Printer Kit-D1.
- ** 512MB Expansion RAM-C1 required.
- *** PDF High Compression Kit-A1 required.
- † Requires Web Access Software-B1. (Check with your local Authorized Canon Dealer for availability.)
- ^ Requires Color PCL/PS Printer Kit-D1 if printing PDF files.
- ^^ Requires additional accessories.

MODULAR AND VERSATILE

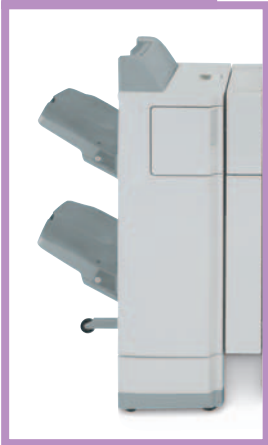
The imageRUNNER C3170 Series can be easily configured to expand your possibilities.

If your office does lots of scanning and copying, add the optional Duplexing Automatic Document Feeder-L1 to quickly capture multipage and different-size originals. True 600-dpi scanning and Canon's image enhancement technologies ensure every page is reproduced with outstanding image quality.

The imageRUNNER C3170 Series includes a dual 550-sheet Universal Cassette Paper Feeding System plus a 50-sheet Stack Bypass that can handle stocks up to 90 lb. Index and 12" x 18" for the production of durable reports, signage, and full-bleed comps. Of course, stackless duplexing is standard for the unlimited creation of two-sided pages

and booklets, but the imageRUNNER C3170 Series' superior paper handling doesn't stop there. The optional Cassette Feeding Unit-Y2 adds two more 550-sheet sources for media flexibility when the job calls for adding covers and inserts. For higher-volume needs choose the 2,500-sheet Paper Deck-Q1 to minimize paper reloading. Or add both—the choice is yours to configure the system to meet your evolving applications.

Finisher-Q3



Choose the Finisher-Q3* for multiposition stapling and collating tasks, or step up to the Saddle Finisher-Q2* for increased stacking capacity and stapling versatility. For the ultimate in finishing productivity, the Saddle Finisher-Q2* offers multiposition stapling, automatic saddle-stitching, and folding for booklet production.

Saddle Finisher-Q2



DADF-L1



Feed stacks of single- or two-sided originals for copying, scanning, storing, or sending through the versatile DADF.

Paper Trays

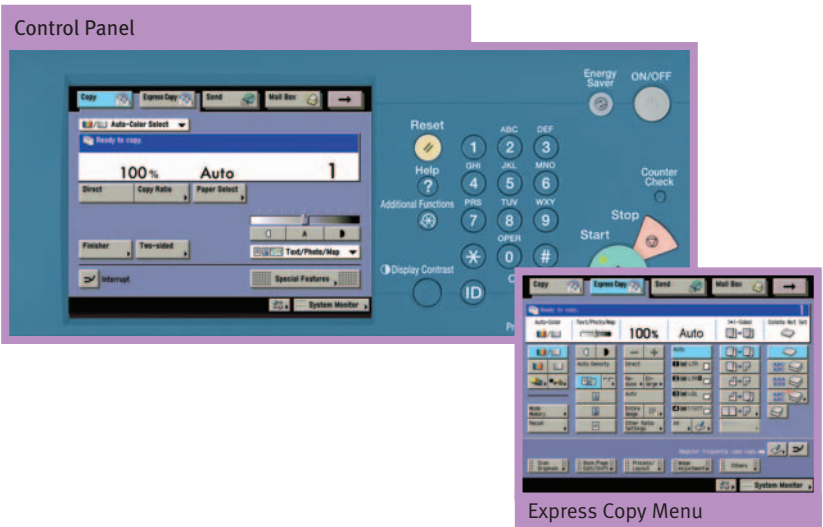


Feed stocks up to 90 lb. Index and as large as 12" x 18" through all paper cassettes.

* Puncher Unit-M1 (optional) available for two- or three-hole punching. Must be configured with Finisher-Q3 or Saddle Finisher-Q2.

ADVANCED FEATURES TO MEET YOUR EVOLVING NEEDS

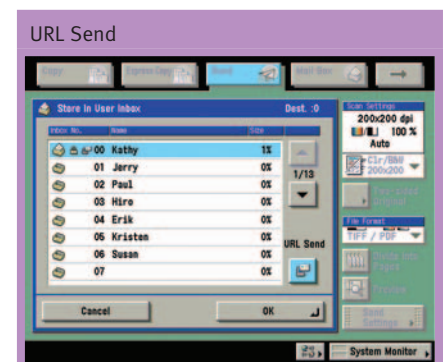
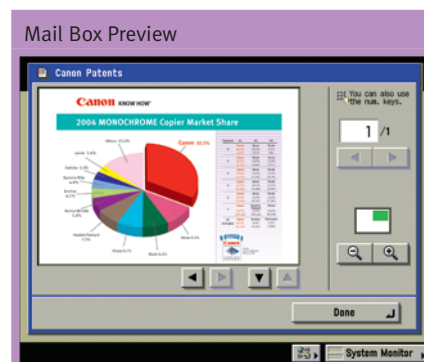
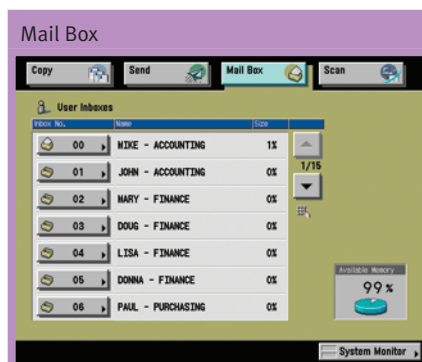
Enhancements to Digital Copying and Mail Box functions make competitive systems seem like ancient history.



While other systems struggle to meet imageRUNNER standards, Canon continues to set the pace with innovations that help keep your business at the cutting edge.

Take copying, for instance. When full-color or monochrome hard copy is required, users can easily switch between the standard display and the Express Copy menu to speed the programming of desired features. There's even a language switch to quickly jump to another language for multilingual offices or executives visiting from abroad. The imageRUNNER C3170 Series can create virtually unlimited combinations of page/copy set numbering, watermark, and date printing modes to meet your office's document tracking and Bates Stamping requirements. Automatic Color Selection decides which pages are to be printed in black or full color, saving money and time. A wide range of image and color manipulation features, such as Area Designation or Form Composition, allow for document editing.

When digital storage of hard-copy originals is required, your Canon imageRUNNER C3170 Series device serves as a local archival solution—at no additional cost—with its standard Mail Box function. Up to 100 Mail Boxes can be password-protected for increased security. Documents may be reprinted on demand with original image quality intact. What's more, users may preview thumbnails of stored documents in the full color display for easy identification, and Merge and Save function features allow users to create new documents, delete or insert individual pages into a file, and even save them to multiple Mail Boxes in a single operation. If the resulting file is larger than your e-mail server can handle, no problem! Send the URL address of the Mail Box and let your recipients download the file at their convenience with Canon's URL Send function.* One more example of how imageRUNNER technology is pushing the limits of what you can expect from a complete document production and communications solution.



*Recipients must be within Local Area Network.



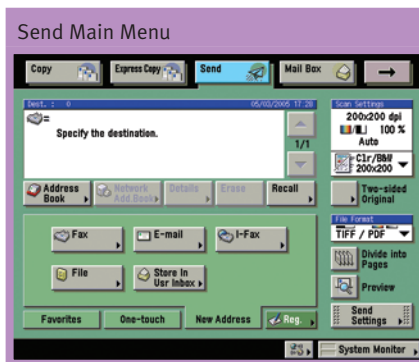
BRIDGING THE GAP BETWEEN GENERATIONS AND DESTINATIONS

Canon's information sharing and document management technologies help bring order to chaos as MFPs evolve into true network peripherals.

Standard on every imageRUNNER C3170 Series model, Canon's Color Universal Send technology is the optimal paperless document distribution solution for smaller workgroups and departments. Leverage the power of your existing network infrastructure to share data and reduce faxing, filing, and hard-copy shipping expenses across your organization. Simply scan a document with the desired page, color, and image editing settings, select one of several industry-standard file formats, and push it to any network recipient in full color. Canon's next-generation Color Universal Send even allows network administrators to restrict access to specific destinations for complete control over information distribution. When communication needs extend beyond networked recipients, the imageRUNNER C3170 Series answers the call with optional Super G3 faxing to transmit documents as fast

as three seconds per page.** As plain paper fax machines, the imageRUNNER C3170 Series delivers outstanding image quality and offers a robust feature-set, including advanced forwarding, one-touch dialing, and a dual line option for fax-intensive environments. With the bundled Canon Fax Driver, connected users can easily send faxes with cover pages right from the desktop.

Add the optional PDF High Compression Kit-A1 to the imageRUNNER C3170 Series' standard Color Universal Send function and send complex and detailed color pages efficiently over network lines. Canon's PDF High Compression technology squeezes files to their absolute minimum size, without impacting image quality, so that recipients can see documents exactly as intended, despite the original file size.



PDF High Compression Mode

File Size Comparison

Original: Letter-Sized Hard-Copy (Color Graphics with Text)



Canon's PDF (Compact)
300-dpi Color Scan
File Size: 150KB

PDF File Format
300-dpi Color Scan
File Size: 2MB

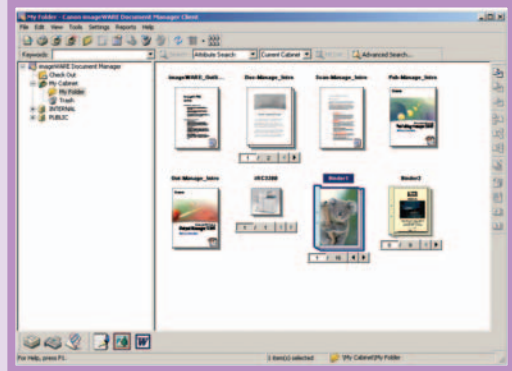
PDF File Format
300-dpi B/W Scan
File Size: 390KB

**Approximate 3-second-per-page fax transmission time based on ITU-T No. 1 Chart (JBIG, Standard Mode) at 33.6 Kbps modem speed when transmitting to another V.34 machine. The Public Switched Telephone Network (PSTN) currently supports 28.8 Kbps modem speeds or lower, depending on telephone line conditions.

NEXT-GENERATION IMPROVEMENTS FOR A TRULY INNOVATIVE SOLUTION

When the optional Universal Send PDF Enhancement Kit-C1 is installed in conjunction with the PDF High Compression Kit-A1 (also optional), users can take advantage of advanced capabilities, including Searchable and Encrypted PDF. The Searchable PDF feature uses optical character recognition (OCR) processing on a scanned image to extract text and create a document that can be searched by keywords. The Encrypted PDF function sets a password for the scanned file, limiting the ability to open, edit, or print the file to recipients with the proper password for improved security.

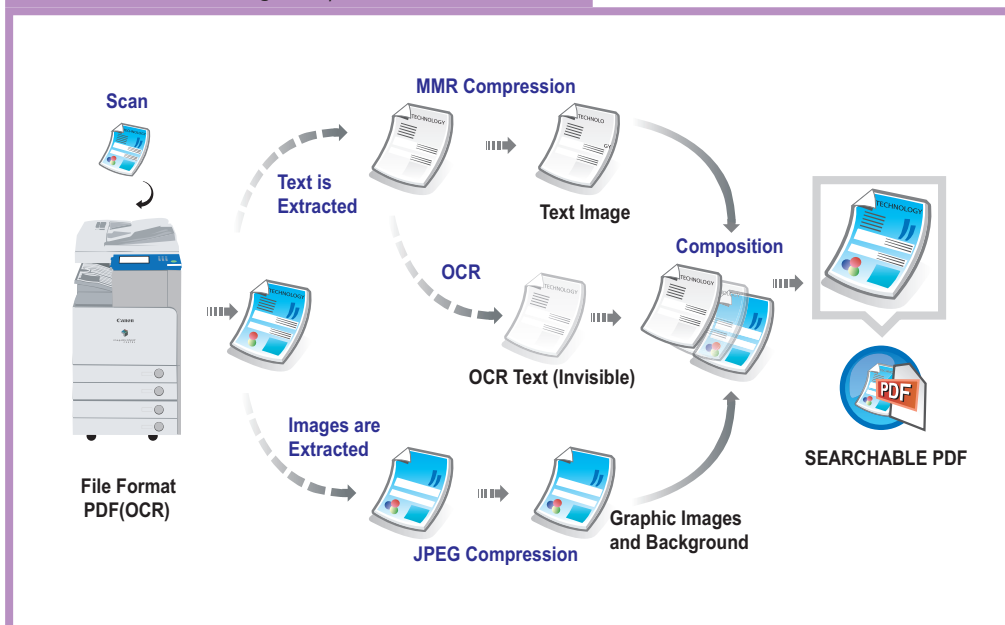
imageWARE Document Manager



Canon imageWARE™ Software

After your mountains of hard copy have been transformed into digital documents, how do you manage them to ensure efficient archival and retrieval? The answer is Canon's optional imageWARE software. Featuring utilities such as imageWARE Scan Manager for capturing and indexing paper originals and imageWARE Document Manager for organizing these files into an easy-to-manage database, Canon supplies the software to streamline your workflow, improve employee productivity, and positively impact your bottom line.

Searchable PDF with PDF High Compression



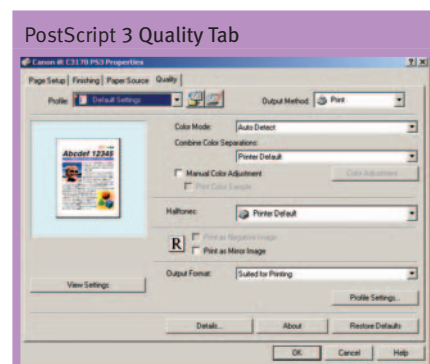
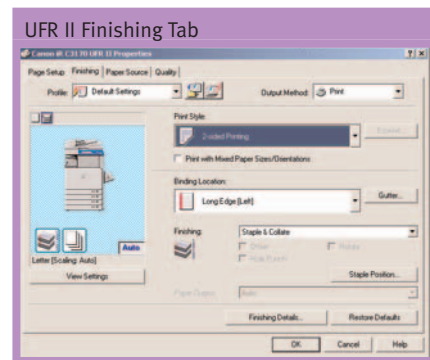
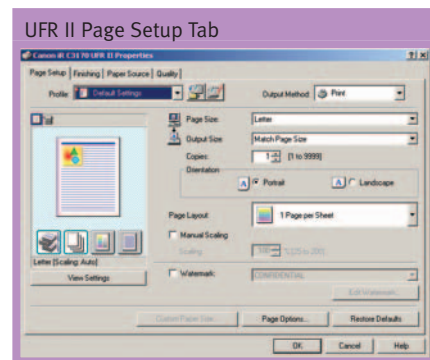
PRINTING FUNCTIONS THAT PUT THE imageRUNNER C3170 SERIES IN A CLASS BY ITSELF

Print faster, easier, and in more ways than you ever thought possible.

The print-ready imageRUNNER C3170 Series puts the right amount of printing power just where your business needs it—in the hands of every connected user. True 600-dpi scanning and Canon's image enhancement technologies help ensure that every page is reproduced with outstanding image quality at resolutions of up to 2400 x 600 dpi. Both models leverage the power of dual processors to ready pages for output faster than ever before and drive the engine at rated speeds for maximum productivity.

Both devices ship standard with Canon's proprietary Ultra Fast Rendering (UFR) II printing technology. With support for both Windows® and Macintosh® operating systems, UFR II offers the ideal blend of speed and simplicity for budget-conscious offices producing typical Microsoft® Office files. This unique printing solution uses the processing power of the sending PC to balance the data load and augment its own capabilities to prepare files at blazing speed. As a result, professionally finished documents are generated quickly from a few simple point-and-click print commands in the user-friendly UFR II driver screens. The Color PCL/PS Printer Kit-D1, which ships standard with the "i" model and is available as an option on the "U" model, enables the efficient processing of larger PDF documents, PCL files, and sophisticated PostScript® 3™ (emulation) data in general office environments.

The imageRUNNER C3170 Series even allows users to add digital data to printed sets, such as set numbering for document tracking needs with complete control over size, position, numbers, color, and density. When the file needs to be archived, the device can even print to multiple Mail Box destinations in a single operation for paperless document storage.



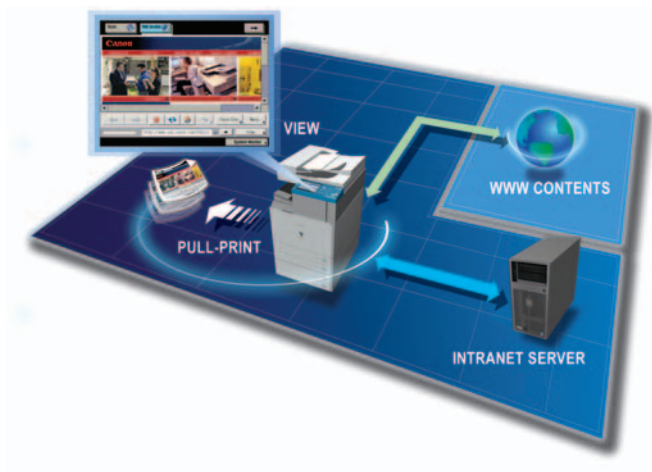
CREATE A BETTER WORKFLOW TO FIT YOUR NEEDS

The stress of managing information, multiple tasks, and devices the old way is gone. Canon helps you get back to doing your real job.

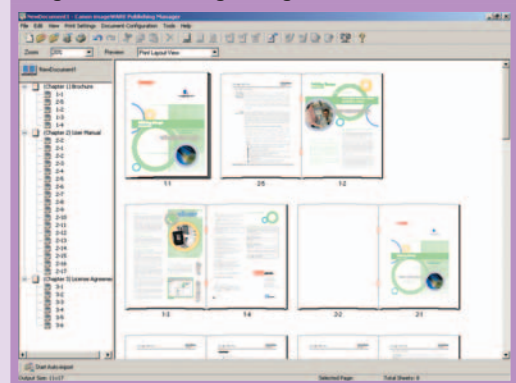
Special printing requirements* are no stretch for these color-enabled imageRUNNER devices either. Maintain confidentiality with the Secured Print function. Print PDF files directly, without opening Acrobat®, to help minimize network traffic. Insert separator pages between jobs. Restrict the ability of individual network addresses to access the printer. The imageRUNNER C3170 Series can do it all.

Access the Internet from Your imageRUNNER Device!

When information is already in printable form, the imageRUNNER C3170 Series lets you completely bypass the PC. This innovative Web Access option features customized software to link users directly to the Internet through the imageRUNNER C3170 Series devices' control panel with familiar browser navigation and complete control over Internet accessibility settings. Access Internet or intranet sites by typing in the URL or selecting a favorite address, and view and print Web pages and PDF files.†



imageWARE Publishing Manager



Put It All Together with Canon imageWARE Publishing Manager

The powerful combination of imageRUNNER hardware and Canon's optional imageWARE Publishing Manager software delivers a complete solution for compound document creation with optimal output quality. Produce professional-looking documents containing various source files, color inserts, and content types with access to a number of editing, imposition, stamping, and finishing capabilities. Every connected user now has the ability to create sophisticated manuals, brochures, catalogs, proposals, reports, books, and presentations in a simple drag-and-drop document building environment.

*May require optional equipment.

†PDF printing only is available on the imageRUNNER C3170U when the Canon Color PCL/PS Printer Kit-P1 is installed (standard on C3170i model).

A STEP AHEAD OF THE CURVE

The imageRUNNER C3170 Series goes the extra distance to ensure total device and data security to deliver peace of mind.

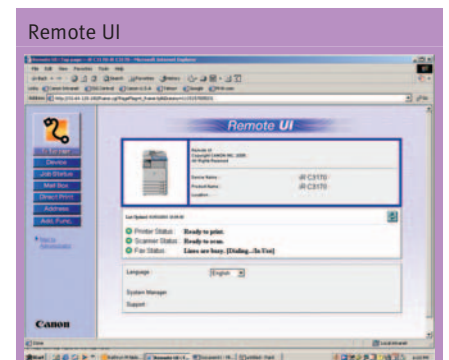
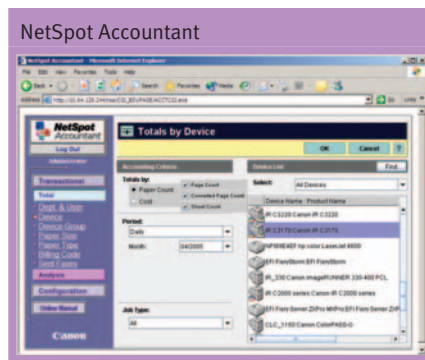
With all the critical data flowing through your network, it's no wonder security is one of your top priorities. Left unprotected, that network connection to your MFP is an open door, leaving valuable corporate data vulnerable to loss and theft. That's why Canon has equipped the imageRUNNER C3170 Series with a wide range of tools and utilities to control device access, track and restrict system usage, monitor status in real-time, and even allow for device customization.

Start by knowing who is using the system and what they're printing. Canon's Department ID Mode tracks and limits access to walk-up users assigned a valid name and password. Set volume ceilings and control access to color or black-and-white copy, scan, and print functions for up to 1,000 departments or users. Single Device Login (SDL) performs user authentication and can be linked to Department ID. Single Sign-On (SSO), another network authentication tool, permits existing network IDs and passwords to be used so employees can maintain a single identity for all network security functions.

Once device access is granted, Canon's NetSpot® Suite and Remote UI help ease administrative burdens of installing, monitoring, and managing networked devices, while the new Device Information Delivery settings broadcast desired settings of a target machine to all other networked imageRUNNER systems throughout the department for identical operability. To help manage multiple printers in larger environments, Canon's optional Print Server Appliance (PSA) simplifies device discovery, management, and driver downloads to relieve IT staff of individual client support/upgrade responsibilities. With Remote UI, users can see up-to-the-moment system status from a standard Web browser to make informed printing decisions and boost productivity across the workgroup.

Modify System Operability to Meet Unique Workflows

Based on Java technology, Canon MEAP architecture allows the system to incorporate unique applications that run embedded within the device. The result is total integration into your company's infrastructure by presenting customized applications to walk-up users directly from the device's full-color LCD panel.



EXCEEDING YOUR EXPECTATIONS

While most multifunction devices only deliver the basics, the imageRUNNER C3170 Series offers all the tools to help you perform your best.



Voice Guidance

Critical Information Under Virtual Lock and Key

The imageRUNNER C3170 Series security features protect every bit and byte of critical information. Password-protect Address Books, Mail Boxes, and individual files, and even encrypt data and passwords as they flow over the network to help prevent interception and deciphering by hackers. Authenticate users with their existing Windows network or LDAP e-mail server IDs, and set restrictions on network destinations to help guard against transmissions to unauthorized destinations. For even greater protection, the optional imageRUNNER Security Kit-A2 enables 168-bit encryption and can overwrite the hard disk to completely erase stored data.

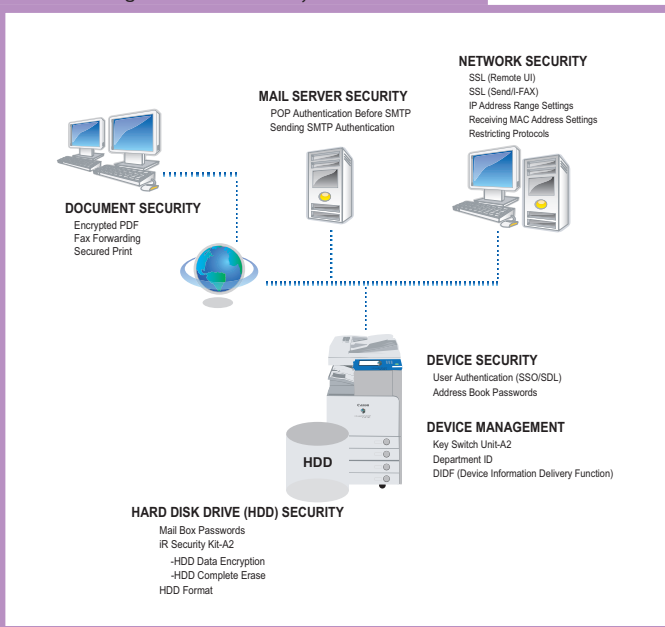
Section 508 Compliance: Advanced Options Bring Total Access to All Users

The imageRUNNER C3170 Series goes even further to ensure equal device access to all authorized users. Users can operate the system from a laptop or desktop computer using the Remote Operator's Software Kit-A1 that emulates control panel operability on a PC screen. Visually impaired users can receive audible job confirmation through the optional Voice Guidance Kit-A2. Together, these features bring professional documents to production, regardless of physical abilities.

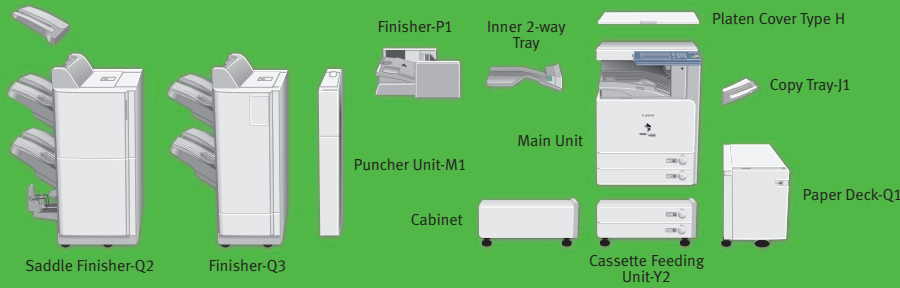
Image of a Leader

As the industry's leading producer of network-connected multifunction devices, Canon continues to set new standards for quality, performance, and reliability. That's why you can trust Canon to provide you with solutions to make your department more productive and your business more competitive.

Device Management and Security



Additional Finisher Tray-A1



imageRUNNER®
C3170 SERIES

imageRUNNER C3170 Series Specifications

Type:	Color Digital Multifunction Imaging System
Imaging System:	Laser Dry Electrostatic Transfer
Developing System:	Dry Dual Component Developer
Image Server Memory C3170U:	512MB (Std.) + 80GB HDD
C3170i:	1GB (Std./Max.) + 80GB HDD
Copy/Print Speed (B/W, Color):*	Up to 31 ppm/7 ppm (Letter)
Scan Speed:	Up to 44 ipm (B/W and Color at 300dpi)
Printing C3170U:	UFR II (Std.): PCL5c and PS Emulation (Opt.)
C3170i:	UFR II, PCL 5c, PS Emulation (Std.)
Print Resolution:	Up to 2400 dpi Equivalent x 600 dpi
Copy Resolution:	600 dpi x 600 dpi
First-Copy Time:	Less than 8 Seconds (B/W)
	6 Minutes or Less (Color)
Warm-Up Time:	11" x 17"
Max. Original Size:	12" x 18"
Max. Copy Size:	3-7/8" x 5-9/16"
Min. Copy Size:	5 Jobs
Max. Copy Reservation:	100
Max. Mail Boxes Supported:	Auto-Color Select, Full Color, Black, Single Color, Two Colors
Color Modes:	Automatic, Manual (9 Levels)
Copy Exposure:	Text/Photo/Map, Printed Image, Photo, Text
Original Type:	256 Gradations (Continuous-tone)
Half-tones:	Standard Automatic Trayless
Duplexing:	Duplexing up to 28 lb. Bond
Copy Ratio:	25% to 400% (in 1% Increments)
Special Features:	Two-Page Separation, Cover/Sheet Insertion, Image Combination, Shift, Booklet, Transparency Interleaving, Job Done Notice, Margin, Different-Size Originals, Job Build, Scan Image Check, Frame Erase, Image Creation, Sharpness, Image Adjustment, Area Designation, Form Composition, Pg/Copy Set Numbering, Recall, Watermark/Print Date, Mode Memory 1 to 999
Multiple Copies:	Color Network ScanGear
Network Scanning Utility:	E-Mail, I-Fax, Super G3 Fax (Opt.; 1 or 2 Lines), File Server (IPX, FTP, SMB), User Inbox (includes URL Send)
Color Universal Send (Std.):	Max. 1,800 Destinations
Sending Methods:	Max. 5 LDAP Servers
Address Book Capacity:	TIFF, JPEG, PDF, PDF (Compact) (Opt.),** PDF (OCR) (Opt.)**
File Formats:	Statement to 11" x 17"
Sending Sizes:	Dual 550-Sheet Paper Cassettes
Paper Sources:	Stack Bypass (50 Sheets)
Standard:	2,500-Sheet Paper Deck (20 lb. Bond)
Optional:	Dual 550-Sheet Cassette Feeding Unit (4,750 Sheets Max.)
Paper Weight:	17 lb. Bond to 90 lb. Index
Network Interface Connections:	10/100Base-T (RJ-45), USB 2.0
Dimensions (H x W x D):	29-3/4" x 22-1/4" x 29-3/4" (754mm x 565mm x 755mm)
Installation Space (W x D):	40-3/4" x 48-3/4" (862mm x 755mm) (When Stack Bypass is Extended)
Weight:	190 lb. (86.2 kg)
Power Requirements:	120V AC, 60Hz, 11A
Power Consumption:	1.2kW (Max.)
Toner Yield:	23,000 Black @ 5% Coverage, 8,500 Each Color @ 5% Coverage

Optional Accessories

Duplexing Automatic Document Feeder-L1	Acceptable Originals: Statement to 11" x 17"
	Capacity: 50 Sheets (20 lb. Bond/Letter)
	Max. Paper Weight: 13 lb. to 32 lb. Bond (Letter, One-Sided)
	13 lb. to 32 lb. Bond (Letter, Two-Sided)
Cassette Feeding Unit-Y2	Paper Capacity: Dual 550-Sheet Paper Cassettes (1,100 Sheets/20 lb. Bond)
	Acceptable Paper Size: Statement-R to 12" x 18"
	Acceptable Paper Weight: 17 lb. to 90 lb. Index
Envelope Feeder Attachment-C1	Copy Speed: 3.4 cpm (Monarch), 2.2 cpm (Other)
	Acceptable Envelopes: COM10, Monarch, DL, ISO-B5, ISO-C5, Yougata 4
	Feeder Capacity: Approx. 50 Envelopes or 1-1/4"
Paper Deck-Q1*	Paper Deck Capacity: 2,500 Sheets (20 lb. Bond)
	Paper Size: Letter
	Acceptable Paper Weight: 17 lb. to 28 lb. Bond
Inner 2-Way Tray-C1	Acceptable Paper Weight: 17 lb. to 90 lb. Index
	Number of Trays: Two
	Tray Capacity (20 lb. Bond)
	Lower Output Tray: 250 Sheets (Letter)
	100 Sheets (Other Sizes)
	Upper Output Tray: 100 Sheets (Letter)
	50 Sheets (Other Sizes)
	150 Sheets (Letter)
	Copy Tray-J1 (Optional): Statement to 12" x 18"
	Acceptable Paper Size: Statement to 12" x 18"
Finisher-P1	Number of Trays: One
	Tray Capacity:
	Non-Collate/Collate/Group Mode: 500 Sheets (Letter, Statement)
	Staple Mode: 500 Sheets/30 Sets (Letter-R to 11" x 17")
	Staple Position/Size: 11" x 17", Legal, Letter, Letter-R
	Corner Stapling: 11" x 17", Letter
	Double Stapling: 50 Sheets (Letter)
	Max. Stapling Capacity (Up to 20 lb. Bond):
Finisher-Q3* and Saddle Finisher-Q2*	Number of Trays: Two
	Tray Capacity:
	Non-Collate/Collate/Group Mode: 1,000 Sheets (Letter, Statement)
	500 Sheets (11" x 17", Legal, Letter-R, Statement-R)
	1,000 Sheets/30 Sets (Letter)
	500 Sheets/30 Sets (11" x 17", Legal, Letter-R)
	Staple Mode:
	Max. Stapling Capacity: 50 Sheets (Letter), 30 Sheets (Letter-R, Legal, 11" x 17"); 17 lb. to 20 lb. Bond
	Corner/Double:

Saddle-Stitching**	Letter-R, Legal, 11" x 17"
Acceptable Paper Size:	1 to 5 Sheets: 25 Sets
Booklet Tray Capacity:	6 to 10 Sheets: 15 Sets
	11 to 15 Sheets: 10 Sets
	15 Sheets
Max. Stapling Capacity/Set:	
Additional Finisher Tray-A1:	300 Sheets/30 Sets (Top Finisher Tray 1,000-Sheet Max. Decreases to 500) V-Fold
Folding:	
Puncher Unit-M1***	Max. Paper Weight: 17 lb. Bond to 90 lb. Index
Paper Sizes:	
2-Hole:	Letter-R, Legal
3-Hole:	Letter, 11" x 17"
Punch Method:	Sequential Processing System
Punch Types:	2-Hole/3-Hole (Auto Change)
Punch Dust Stock:	Approx. 3,000 Sheets
Super G3 Fax Board-S1†/Multi-Line Fax Board-F1†	Public Switched Telephone Network (PSTN)
Applicable Line:	
Connection Lines:	One
Super G3 Fax Board-S1:	Two
Super G3 Multi-Line Fax Board-F1:	Statement to 11" x 17" (from Document Feeder)
Sending/Original Size:	Statement to 11" x 17"
Recording/Printing Size:	Statement to 11" x 17"
Canon Color PCL/PS Printer Kit-D1 (Standard w/C3170)†	
Processor:	Canon Custom Processor—Shared
RAM:	1GB—Shared
Hard Disk:	80GB—Shared
PDL Support:	UFR II, PCL 5c, PostScript 3
	Emulation, PDF r.1.5
Std. Interface Connections:	10/100Base-T (RJ-45), USB 2.0
Accessories:	Barcode Printing Kit-A1
Network OS:	Windows 98/98SE/Me/2000/XP
	Windows NT® 4.0/Server 2003
	Macintosh 9.0 or later, Novell®
	NetWare® v3.2, 4.1, 4.11, 4.2, 5, 5.1, 6.0 (IPX/SPX™)
Additional Optional Accessories	
• Platen Cover Type H	• imageRUNNER 512MB Expansion RAM-C1 (Std. w/ IR C3170i)
• Cabinet-P1	• IR Security Kit-A2†*
• FL Cassette-Y1	• Security Expansion Board-E1
• FL Cassette-Z1	• Voice Guidance Kit-A2†
• Card Reader-C1	• Remote Operator's Software Kit-A1†
• Card Reader Kit-B1	• PDF High Compression Kit-A1†
• Card Sets	• Universal Send PDF Enhancement Kit-C1***
• Key Switch Unit-A2	• Accessibility Handle-A1
• Braille Label Kit-A1	
• Web Access Software-B1†**	
* During printing, the engine may occasionally pause for internal adjustment.	
** Requires PDF High Compression Kit-A1.	
*** Requires Universal Send PDF Enhancement Kit-C1.	
■ Cassette Feeding Unit-Y2 or Cabinet-P1 is required for installation.	
■ Available on Saddle Finisher-Q2 only.	
■ Can only be attached if Finisher-Q3 or Saddle Finisher-Q2 is attached.	
† When configured with the imageRUNNER C3170U, requires the imageRUNNER 512MB Expansion RAM-C1.	
▲ Requires Security Expansion Board-E1.	
▲▲ When configured on the IRC3170U, requires Color PCL/PS Printer Kit-D1 if printing PDF files.	

As an ENERGY STAR® Partner, Canon U.S.A., Inc. has determined that these products meet the ENERGY STAR® guidelines for energy efficiency. ENERGY STAR and the ENERGY STAR mark are registered U.S. marks. Microsoft, Windows, and Windows NT are registered trademarks of Microsoft Corporation in the United States and/or other countries. Acrobat and PostScript are registered trademarks of Adobe Systems Incorporated in the United States and/or other countries. Macintosh is a registered trademark of Apple Computer, Inc. Novell and NetWare are registered trademarks of Novell, Inc. in the United States and other countries. IPX/SPX is a trademark of Novell, Inc. CANON, IMAGERUNNER, NETSPOT, and MEAP are registered trademarks, and UNIVERSAL SEND and the GENUINE logo are trademarks of Canon Inc. in the United States and may also be registered trademarks or trademarks in other countries. IMAGEWARE is a registered trademark of Canon U.S.A., Inc. in the United States and is a trademark of Canon Inc. in certain other countries. REMOTE UI is a trademark of Canon U.S.A., Inc. IMAGEANYWARE is a trademark of Canon. All referenced product names and other marks are trademarks of their respective owners. Specifications subject to change without notice. ©2006 Canon U.S.A., Inc. All rights reserved.

Federal Law prohibits copying of certain documents. Violators may be subject to penalties. We suggest that you check with your own legal counsel. Canon U.S.A., Inc. and Canon Canada, Inc. intend to cooperate with Law Enforcement Agencies in connection with claims of unauthorized copy™.

0059W232
0106R-C3170-82.5M-P



PRINTED ON RECYCLED PAPER IN THE U.S.A.

Canon
imageANYWARE

1-800-OK-CANON
www.usa.canon.com

Canon U.S.A., Inc.
One Canon Plaza
Lake Success, NY 11042